



ADULT EDUCATION WOLVERHAMPTON

INFORMATION GUIDE

2026/27



aes.wolverhampton.gov.uk



enquiries@aes.wolverhampton.gov.uk



01902 558180

WELCOME

Welcome to Adult Education Wolverhampton (AEW). Located in the heart of the city centre, we provide learning in an adult only environment.

We invite you to learn with us, we are serious about your success. Be inspired by our high-quality courses to get the lifelong learning habit and gain the benefits learning new skills provides.



At Adult Education Wolverhampton, we provide a welcoming, adult-focused environment where your ambitions come first. Whether you're looking to gain new skills for employment, progress in your current role, or build confidence for the next step in your career, our courses are designed with real jobs and real success in mind.

Our specialist teachers bring industry experience and practical knowledge into every session, ensuring you develop the skills employers value most. Supported by dedicated teams who are here to guide you every step of the way, you'll benefit from a learning experience that is flexible, inclusive, and tailored to adult students.

We are committed to helping you build strong foundations for success. Our courses in English, Maths and Digital Skills are designed to improve your confidence and equip you with the essential tools needed in everyday life and the workplace. Alongside formal learning, we offer opportunities to



grow through volunteering, community involvement and active citizenship - helping you develop confidence, resilience and a sense of purpose.

Whether you're starting your journey or aiming higher, we're here to support you every step of the way.

Take the next step towards your future with the skills, confidence and support you need to succeed.

Anna Pace
Deputy Head of Service

CONTENTS

WELCOME	02
CONTENTS	03
THE AEW STUDENT DEAL	04
SUBJECTS ON OFFER	05
LEARN SKILLS FOR EVERYDAY LIFE & WORK	06
COURSES	07
LEARN SKILLS FOR WELLBEING	19
HOW TO ENROL	20
FINANCIAL SUPPORT	21
ADDITIONAL SUPPORT	21
STUDENT SERVICES	21
STUDENT GATEWAY	22
HOW TO FIND US	23

(AEW - Adult Education Wolverhampton)

Why you should learn with Adult Education Wolverhampton



- **Adult only classes**
- **FREE courses***
- **FREE childcare***
- **Help with travel & resource costs***
- **Laptop loans & free internet***
- **City Centre location**
- **Expert careers advice**
- **Build skills for real jobs**
- **Friendly, student-first support every step of the way**

(*Subject to eligibility)

**99% students would
recommend AEW**

**99.6% students
feel safe in their class**



SUBJECTS ON OFFER

Access to Higher Education

Arts and Crafts

**British Sign Language (BSL)
and Deaf Awareness**

Business

Cake Decorating

Childcare

Community Learning

Digital Skills & Marketing

English

**English for Speakers of
Other Languages (ESOL)**

Health and Social Care

Into Employment

**Life Skills
(for learning disabilities,
learning difficulties and/or
autism)**

**Like Minds
(activities for improving
mental health)**

Maths

**Supported Employment and
Supported Internships**

Teaching Assistants

Volunteering



SCAN THE QR
CODE TO VISIT
OUR WEBSITE

LEARN SKILLS FOR EVERYDAY LIFE & WORK

One of the best ways to open doors in life is to improve your core skills.

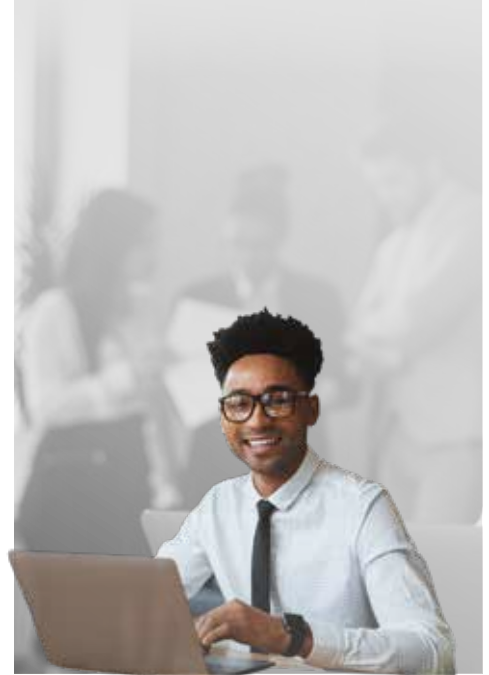
Whether you want to learn for personal or professional reasons, we will have a course to suit you.

We are recognised for our expertise in teaching English, Maths, ESOL and Digital Skills.

When you join us, you will be taking the first step to changing your life.

Get a job, get a better job or start working for yourself.

Whatever your reasons, we have learning opportunities to suit you. From getting on the first step of the ladder to improving your Prospects in your current role.





ENGLISH

Functional Skills English Level 1 develops practical reading, writing, speaking, and listening skills for everyday life, work, and further study, helping adults build confidence and progression to higher qualifications like Level 2 English, GCSE English, or apprenticeships. The course is delivered through real-life tasks and assessed via a mix of internal and external exams, with support provided throughout to help students succeed.

Functional Skills English Level 2 is a nationally recognised qualification, equivalent to GCSE Grade 4/C, that helps adults develop practical reading, writing, speaking, and listening skills for work, study, and everyday life. The course focuses on real-world tasks, is assessed through internal and external exams, and supports progression to further education, apprenticeships, and careers requiring strong communication skills.

GCSE English Language develops essential reading, writing, and spoken language skills for adults, supporting employment, further study, and progression to higher-level courses or careers. The course includes analysis of fiction and non-fiction, creative and persuasive writing, and spoken communication, assessed through coursework, mock exams, and two final written exams.



MATHS

The **Maths Entry Level** course helps adults build confidence in practical, everyday maths for home, work, and community tasks, providing a supportive environment for learning. Through classroom activities, worksheets, and ongoing assessment, students prepare to progress to Functional Skills Level 1 or GCSE Maths while improving numeracy skills for daily life.

The **Maths Level 1** course is a nationally recognised qualification for adults seeking to improve practical maths skills for everyday life, work, and further study, providing a stepping stone to Functional Skills Level 2 or GCSE Maths. It combines classroom lessons, practical activities, and assessments to build confidence, problem-solving skills, and employability while supporting progression to higher-level qualifications and vocational courses.

The **Maths GCSE** course is a nationally recognised Level 2 qualification designed for adults to develop essential maths knowledge, problem-solving skills, and confidence for work, further study, and everyday life. Lessons combine classroom teaching, practical tasks, and online resources, with progress assessed through mock and final exams, enabling students to advance to higher-level courses, vocational training, apprenticeships, or Access to HE.

BUSINESS, DIGITAL SKILLS & IT



BUSINESS

The **Business and Retail Level 1** course is an introductory qualification that builds essential skills in customer service, communication, digital tools, and workplace conduct, preparing students for entry-level roles in retail, business, or office environments. Assessed through continuous coursework rather than exams, it supports progression to higher-level qualifications or apprenticeships while developing confidence and practical, job-ready skills.

The **Business Skills Level 2** course is a nationally recognised qualification that develops knowledge of business operations, communication, customer service, and workplace practices for roles in administrative and business environments. Assessed through a portfolio of coursework, it builds transferable employability skills and supports progression to Level 3 qualifications, apprenticeships, or entry-level business and customer service roles.

“I learn more every day”



DIGITAL SKILLS & MARKETING

The **Essential Digital Skills Entry Level 3** course is designed for adults with little or no digital experience, teaching practical skills for using devices, communicating online, completing tasks like online forms, and staying safe on the internet. Assessed through controlled online tasks, it builds confidence for daily life, work, and learning, while providing a pathway to higher-level digital qualifications and vocational courses.

The **Essential Digital Skills Level 1** course is designed to build advanced digital capabilities for work, learning, and everyday life, covering areas like online communication, document creation, secure transactions, and safe internet use. Assessed through practical, task-based online activities, it develops confidence in using digital tools, enables progression to higher-level digital qualifications, and prepares students for employment or vocational courses requiring digital competence.

The **Developing Online Digital Skills Entry Level 3** course is designed for adults with little or no experience, helping them build confidence using devices, accessing the internet, communicating online, and completing everyday digital tasks safely. Assessed through practical activities, it develops essential skills for daily life and work while supporting progression to further digital qualifications and improving employability.

The **Award in Digital and IT Skills Level 2** is designed for adults to develop advanced digital abilities, including productivity tools, spreadsheets, website design, and problem-solving, supporting employment, further study, or personal development. Assessed through a portfolio of practical tasks, it builds confidence in industry-relevant IT skills and prepares students for digital, administrative, or creative roles while enabling progression to higher-level digital qualifications.

The **IT User Skills (ITQ) Level 2** course is a nationally recognised qualification that develops intermediate digital skills in word processing, spreadsheets, presentations, databases, and productivity tools for work, study, and daily life. Assessed through a portfolio of practical tasks, it builds confidence in using IT for real-world workplace activities and supports progression to Level 3 IT qualifications, specialist IT pathways, or business and administrative roles.

“I feel supported in a safe environment”

The **Social Media Marketing** course is a beginner-level course that teaches adults how to promote products or businesses on social media by creating engaging content, writing captions, using hashtags, and running a small campaign. Delivered through workshops and practical activities, students build confidence in social media marketing and complete a 5-day campaign plan, with progression opportunities to Level 2 Digital Marketing.

The **Digital Marketing Level 2** course is a nationally recognised qualification that develops practical skills in social media, search engine optimization (SEO), email marketing, and digital campaign management, preparing students for roles in marketing, business, or media. Delivered online with teacher support and assessed through written assignments, it builds confidence and expertise while providing a pathway to Level 3 and higher qualifications or entry-level digital marketing positions.

The **Cybersecurity Level 2** course is a nationally recognised qualification that introduces key concepts such as cyber threats, system vulnerabilities, and protective measures to help safeguard data and IT systems. Assessed through a portfolio of coursework, it builds essential digital security awareness and supports progression into IT, cybersecurity training, or roles requiring strong cyber knowledge.

CHILDCARE & EDUCATION



CHILDCARE

The **Caring for a Child Entry Level** course is an introductory qualification for adults with little or no prior experience, providing foundational knowledge and practical skills in child development, health, safety, and play. It is delivered in a supportive environment, assessed through class activities and practical tasks, and offers progression to Level 1 childcare, early years, or health and social care courses, as well as volunteering opportunities.

The **Preparing to Work in Childcare Level 1** course is an introductory qualification that builds foundational knowledge and practical skills in child development, health and safety, communication, safeguarding, and play. It provides continuous assessment, preparing students for further Level 2 childcare, early years, or health and social care courses, as well as volunteering or work experience opportunities.

“I feel welcome, respected and valued at Adult Education Wolverhampton”



The **Certificate in Introducing Caring for Children and Young People Level 2** equips adults with the knowledge and practical skills needed to support child development, safeguarding, health, and wellbeing, preparing them for work or volunteering in nurseries, schools, and community settings. A nationally recognised qualification it builds confidence, enhances employability, and offers a pathway to further Level 2 or 3 childcare, early years, or educational support courses.

The **Diploma for the Early Years Practitioner Level 2** is a nationally recognised qualification for adults who want to work with children aged 0-5, providing essential knowledge in child development, safeguarding, health and safety, and professional practice, alongside practical experience in early years settings. The course is assessed through coursework and practical observation rather than exams. It supports progression to higher qualifications like Level 3 Early Years Educator, and prepares students for roles such as nursery or preschool assistant within childcare environments. A work placement 1 day per week is required.



TEACHING ASSISTANTS

The **Preparing to Work in Schools Level 1** course is an introductory qualification that develops foundational skills in communication, safeguarding, supporting learning, and understanding children's development for school-based roles. It is delivered in a supportive environment with continuous assessment, providing a pathway to Level 2 education courses, volunteering, or entry-level work as a teaching assistant or classroom helper.

The **Safeguarding in a Learning Environment Level 1** course is a qualification that teaches the fundamentals of safeguarding, including recognising abuse, understanding legal responsibilities, and reporting concerns in educational or training settings. It uses continuous assessment, preparing students for Level 2 education courses, volunteering, or entry-level roles in schools, childcare, or student support.

The **Certificate in Supporting Teaching and Learning Level 2** is a nationally recognised qualification for adults seeking roles as teaching assistants or learning support staff, covering child development, safeguarding, communication, behaviour support, and professional practice, with practical school placement experience. The course combines classroom learning, hands-on tasks, and continuous assessment, preparing students for employment in schools and progression to Level 3 education qualifications. A work placement 1 day per week is required.

The **Diploma in Supporting Teaching and Learning Level 3** is a nationally recognised qualification for adults seeking to work as qualified teaching assistants, providing in-depth knowledge of child development, safeguarding, SEND, behaviour management, and practical school experience. The course combines classroom learning, workplace mentoring, and continuous assessment to prepare students for independent support roles in schools, career progression, and further study at Levels 4 and 5. A work placement 2 days per week is required.



“I love my courses”

HEALTH & SOCIAL CARE



HEALTH & SOCIAL CARE

The **Preparing to Work in Health Level 1** course introduces adults to the health and social care sector, helping them build basic knowledge, confidence, and understanding of roles, responsibilities, and key care values. It covers topics such as communication, safeguarding, equality and diversity, and personal development, with learning delivered through classroom activities, discussions, and continuous assessment rather than exams. The course requires no prior experience, leads to a recognised NCFE Level 1 qualification, and supports progression to further study or entry-level roles in care.

The **Working in Health Level 2** course is a one-year programme designed to build foundational knowledge in health, human biology, psychology, and social science, while developing English and study skills needed for Level 3 study. It requires students to have good levels of English and motivation, and provides a supportive pathway to Access to HE Diplomas, further qualifications, or Entry-Level roles in health and care sectors.

“I have learned lots of new skills and met lots of interesting people”



“I am learning and making progress”

ACCESS TO HIGHER EDUCATION (HE)



ACCESS TO HIGHER EDUCATION (HE)

The **Access to Higher Education Diploma in Health Professions** is a one-year Level 3 course that builds knowledge in human biology, health studies, psychology, and academic skills to prepare for university and careers such as nursing, midwifery, and physiotherapy. It requires students to have GCSE English and maths (or willingness to achieve it), and offers a nationally recognised qualification resulting in progression to a wide range of health-related degrees and careers.

The **Access to Higher Education Diploma in Social Science** is a one-year Level 3 course that develops knowledge in psychology, sociology, and criminology, while building the academic and research skills needed for university study. It requires student to have GCSE English and maths (or willingness to achieve it) and provides a recognised qualification, and results in progression to degrees and careers in fields such as social work, education, and criminology.



“I look forward to coming back every week”

“I feel challenged while being well supported”

ARTS & CRAFTS



ART

The **Entry Level 3 Art** course introduces adults with little or no prior experience to creative craft, using hands-on activities to develop confidence, fine motor skills, and self-expression in a supportive environment. Students create simple projects, receive ongoing teacher feedback, and gain an NCFE Entry Level Award in Creative Craft, preparing them to progress to Level 1 courses or further creative study.

The **Art Level 1** course helps adults develop practical creative skills, confidence, and a portfolio through hands-on workshops, guided practice, and supportive feedback. Students can progress to higher-level creative courses, apply their skills in hobbies, community projects, or further study, and gain a nationally recognised NCFE qualification.

“I have enjoyed my learning experience”



This **Art Level 2** course is a practical programme designed to develop adults’ creative skills, confidence, and independence, helping them refine techniques and produce a strong portfolio. It is aimed at adults with some prior experience and covers advanced techniques, idea development, and portfolio presentation through hands-on learning, feedback, and ongoing assessment. The course prepares students for further study, creative opportunities, or employment while supporting personal expression and wellbeing through art.



“I appreciate the convenient location”



SEWING & TEXTILES

The **Sewing and Textiles Entry Level 3** course is an introductory course for adults to develop basic sewing skills, explore fabrics, and complete simple textile projects in a supportive, hands-on environment. It builds confidence, creativity, and practical skills while providing a foundation for progression to Level 1 sewing, textiles, or other creative craft courses.

The **Sewing and Textiles Level 1** course is a practical course for adults to develop sewing skills, use different fabrics, and create high-quality textile projects while building a portfolio. It enhances confidence, creativity, and problem-solving, and prepares students to progress to Level 2 craft, fashion courses, or independent sewing and community projects.

The **Sewing & Textiles Level 2** course is a practical course for adults to develop intermediate sewing and textile skills through hands-on projects, portfolio work, and guided practice. It builds technical ability, creativity, and confidence while preparing students for advanced study, community projects, or independent creative sewing ventures.



CAKE DECORATING

The **Cake Decorating Entry Level 3** course introduces beginners to basic cake decorating skills, building confidence, creativity, and safe working practices through hands-on workshops and teacher guidance. Students can progress to higher-level cake decorating courses, develop skills for hobby or community baking, and produce decorated cakes for personal or small-scale projects.

The **Cake Decorating Level 1** course introduces complete beginners to basic cake decorating skills, building confidence, creativity, and safe working habits in a practical, supportive environment. Students gain hands-on experience making simple decorated cakes for home or personal enjoyment while preparing to progress to higher-level cake decorating courses.

This **Cake Decorating Level 2** course is designed for adults with some experience to develop advanced skills, creativity, and confidence in producing detailed, professional-looking cakes. Through hands-on sessions, demonstrations, and feedback, learners refine techniques such as working with fondant, decorative effects, and themed cake design. The course supports progression to further study, small-scale business opportunities, or personal creative development.



FLORISTRY

The **Floristry Entry Level 3** course introduces adults to basic flower arranging and creative craft techniques, building confidence, fine motor skills, and design awareness in a supportive, hands-on environment. Students can use this foundation to pursue higher-level floristry or creative craft courses, hobbies, community projects, or personal development.

The **Floristry Level 1** teaches adults foundational floristry and creative craft skills through hands-on activities, building confidence, creativity, and practical design abilities. It prepares students to progress to higher-level floristry courses, community projects, or hobby-based creative opportunities while developing a portfolio of their work.

The **Floristry Level 2** course develops intermediate floristry skills, including advanced techniques, design planning, and portfolio creation, suitable for personal, community, or semi-professional use. It prepares students to progress to higher-level creative courses, vocational floristry training, or small-scale event and hobby-based floristry.



LIFE SKILLS

Life Skills classes are ideal for adults (19+) with a learning disability, difficulty, or autism spectrum disorder. The courses are designed to build confidence, independence, and employability or volunteering skills through three learning pathways. Depending on your starting point subjects may include:

- Personal Development Skills
- English Skills
- Maths Skills
- Digital Skills
- Arts and Crafts Skills
- Food and Drink Skills
- Employment Skills
- Community Engagement Skills

“Just the right level with appropriate support”





SUPPORTED INTERNSHIPS AND SUPPORTED EMPLOYMENT

Supported Internships are ideal for young people aged 18-25 with an Education, Health and Care Plan, helping them gain real work experience and move into paid employment.

If you are 19+ without an Education Health and Care Plan, a **Supported Employment** programme will be more suitable.

The course combines a workplace placement, job coach support, and classroom learning including maths, English, and employment skills.

“I am happy and feel safe while at AEW”

“It has been a wonderful experience”



BRITISH SIGN LANGUAGE (BSL)

The **British Sign Language (BSL) Level 1** course is designed to develop basic BSL communication skills for everyday situations, including conversational signing, understanding, and real-life interactions with Deaf individuals. It requires no prior experience and provides a practical recognised qualification and progression to higher-level BSL study or improved communication in workplaces and communities.

The **British Sign Language (BSL) Level 2** course is designed to build on basic BSL skills, developing confidence in longer, more detailed conversations and improving both receptive and expressive communication with Deaf people. It requires prior BSL knowledge (typically Level 1) and provides a practical, recognised qualification and progression to advanced study or improved workplace communication skills.

We also offer none qualification courses for anyone taking their first steps in BSL. Our **Introduction to British Sign Language** course is a great starting point. For those who need skills for work, **Signing in the Workplace** will help you to develop the basic skills you need to interact with others.

ENGLISH FOR SPEAKERS OF OTHER LANGUAGES (ESOL)



ENGLISH FOR SPEAKERS OF OTHER LANGUAGES (ESOL)

ESOL for Beginners is a supportive course for adults with little or no English, helping them build confidence in speaking, listening, reading, and writing for everyday situations. Through practical activities and informal assessment, students develop essential language skills and prepare to progress to Entry Level ESOL courses.

ESOL Entry Level 1 is a beginner course for adults with basic English, helping them develop speaking, listening, reading, and writing skills for everyday life in the UK. Through practical lessons and assessments, students build confidence, gain a recognised qualification, and progress to higher ESOL levels or further education and work opportunities.

“I have fun with other students in class”



ESOL Entry Level 2 helps adults with some English improve their speaking, listening, reading, and writing skills for everyday life, work, and study, supporting independence and community participation. The course uses practical, task-based learning with ongoing assessments to build confidence, prepare for higher-level ESOL qualifications, and enable progression to further education, work, or volunteering opportunities.

ESOL Entry Level 3 helps adults with basic English improve fluency, accuracy, reading, and writing to support independent living, work, volunteering, or further study. Through practical, teacher-led lessons and ongoing assessments, students build confidence and skills to progress to Level 1 ESOL, vocational courses, or employment opportunities.

ESOL Level 1 helps adults who can already communicate at Entry 3 improve their English skills in speaking, listening, reading, and writing for work, further education, and everyday life. Through practical lessons and assessed tasks, students build confidence and independence, preparing for Level 2 ESOL, Functional Skills English, vocational courses, or higher education.

ESOL Level 2 develops advanced English skills in speaking, listening, reading, and writing for confident users, preparing them for employment, vocational courses, further education, and community participation. Through interactive lessons and assessed tasks, students refine accuracy, fluency, and formal communication, enabling progression to Level 3 courses, Functional Skills English Level 2, GCSE English, or professional opportunities.

Learning new skills is an incredible way to enhance your quality of life.

It provides you with an escape when you need it, knowledge when you seek it and a great and satisfying pastime. Improve your confidence, meet new people and look after your mental health and wellbeing.

100% students develop wider skills

“I can see a big improvement in my life”



COMMUNITY LEARNING



INTO EMPLOYMENT

Into Employment courses support adults in gaining practical skills, qualifications, and confidence to move into work or further training. These programmes often delivered in the community with partner organisations combine classroom learning with employability support tailored to local job opportunities and key sectors in Wolverhampton.



LIKE MINDS

Like Minds courses focus on supporting adults with mental health needs by building confidence, wellbeing, and social connection through informal group learning activities. These courses provide a safe and supportive environment where students can develop skills at their own pace while improving resilience and pathways into further education or community engagement. Subjects offered include art, crafts and yoga.



VOLUNTEERING

The **Award in Volunteering Level 1** course is a qualification that builds confidence, communication, teamwork, and practical skills needed to volunteer safely in community, school, charity, or care settings. It is delivered through interactive, supportive learning with continuous assessment, providing a pathway to volunteering roles, higher-level qualifications, or employability programmes.

“I am improving with confidence”



HOW TO ENROL

Online -

www.webenrol.com/wolverhampton

In person - visit us in: City Learning Quarter, Foyer Building, Old Hall Street, Wolverhampton. WV1 3AU

By Telephone - call us on 01902 558180

Come to an open day - check our website www.aes.wolverhampton.gov.uk for the date of the next one.



Scan the QR code to visit our open day page

FINANCIAL SUPPORT

We can help with the cost of your learning and many of our courses are FREE. Ask us about help to pay for:

- Course fees
- Exam fees
- Travel
- Childcare
- Resources (subject to eligibility)



Scan the QR code to visit our Student Services page



Call Student Services on 01902 558180 or visit us in the Student Gateway, located: City Learning Quarter, The Foyer Building, Old Hall Street, Wolverhampton WV1 3AU



Scan the QR code to Contact Us form

ADDITIONAL SUPPORT

Let us know if you have a learning difficulty, a disability, a health or mental health issue.

HELP ON OFFER INCLUDES:

- one-to-one learning support in class
- specialist equipment
- assistive technology
- support plan
- Communication Support Worker in class
- extra help with English and Maths

STUDENT SERVICES

We are available every weekday to offer support and guidance.

HOW WE CAN HELP:

- course information
- careers guidance
- financial help
- support for learning
- keeping you safe
- listening to your views



GET ALL THE INFORMATION AND ADVICE YOU NEED TO MAKE YOUR NEXT CAREER MOVE.

Accurate, up to date information, managed by professional careers advisers.

Lifepilot has everything in one place to help you decide what to do next.

And it's FREE! Visit: www.life-pilot.co.uk



Lifepilot also includes Career Tools. Scan to find out more

STUDENT GATEWAY

The Student Gateway is a modern, vibrant space for students to relax, socialise and study.

You can speak to the Student Services Team who provide a range of support services to make sure every students' learning experience is the best that it can be.

The **'Student Space'** is an inviting area where you can:

- use computers to support your study and carry out job search
- work independently or in groups on course work associated with your learning
- connect your own device at the ICT 'breakfast bar'
- take a break
- socialise with others
- eat lunch



HOW TO FIND US:

City Centre site. Easy to get to and only 5 minutes walk from Wolverhampton bus, tram and railway station.



Foyer Building



Old Hall Street Building



Alan Garner Building
(including rooms in the library)

Adult Education Wolverhampton
City Learning Quarter
Old Hall Street
Wolverhampton
WV1 3AU



FIND US ON GOOGLE MAPS

Scan the QR Code with your mobile device to locate our Foyer Building on Google Maps.

what3words:///causes.jolly.bricks

Adult Education Wolverhampton

City Learning Quarter
Old Hall Street
Wolverhampton
WV1 3AU

T. 01902 558180

E. enquiries@aes.wolverhampton.gov.uk

www.aes.wolverhampton.gov.uk



IMPORTANT

The information published in this leaflet was correct at the time of publication. However Adult Education Wolverhampton reserves the right to revise times, dates, fees, locations and qualifications of courses for business reasons. Because courses may be subject to unforeseen change, alteration or cancellation, the information in this leaflet cannot be considered as binding or final.



|20260527|



aes.wolverhampton.gov.uk



enquiries@aes.wolverhampton.gov.uk



01902 558180