

# Inbrief

## An outstanding result

Wolverhampton Adult Education Service Graded Outstanding by OFSTED



## Introducing Sue Knottenbelt

I joined Wolverhampton Adult Education Service as Interim Head of Service in January 2015. My previous job was Head of Adult Learning in Birmingham, the biggest Adult Education provider in the country. As well as Birmingham, I have also worked in West Bromwich and Walsall, but this is the first time I have had the opportunity to work in Wolverhampton. I have been given a very warm welcome from everyone here so far and I am really enjoying getting to know the Service and the city. I feel very lucky and privileged to be joining one of the very best adult education services in the country. I intend to be out and about in the coming months and look forward to personally meeting as many students and staff as possible.

# In this issue

2. Introducing Sue Knottenbelt
3. An Outstanding Result
4. This could be you!  
FE choice Survey  
NUS Extra Card
5. Together Showcase Exhibition
6. Foyer Café
7. Foyer Café Fundraising



## Introducing Sue Knottenbelt Continued.....

### OFSTED SUCCESS

I'm sure you will have heard by now that in December 2014 Wolverhampton Adult Education Service was inspected by Ofsted and judged against the very demanding set of criteria set out in the "Common Inspection Framework". The inspection took place with just 2 days' notice. Ofsted inspectors visited all of our main learning centres and observed a lot of our classes in action. They met with students, tutors, managers, senior officers, councillors and the partners we work with. They analysed our student retention, achievement and success rates over the past 3 years and looked at how many students progress into further learning, higher education and employment.

On the basis of all the evidence they looked at, they judged Wolverhampton Adult Education Service to be **OUTSTANDING** in all aspects – Outcomes for Learners, Teaching, Learning & Assessment and Leadership & Management. This is the best Ofsted inspection report the Service has ever had. Only five colleges in country have achieved an "Outstanding" rating by Ofsted and we are one of only three adult education services in the county to have achieved this top rating. This is a tremendous achievement and a great tribute the hard work of both students and staff.

---

The full Ofsted report is available on our own website at [www.aes.wolverhampton.gov.uk](http://www.aes.wolverhampton.gov.uk) or on the Ofsted website [www.ofsted.gov.uk](http://www.ofsted.gov.uk).

### WE ARE ESPECIALLY PLEASED THAT YOU AGREE TOO!

Ofsted shared the results of their learner views survey results. This showed that 99% of our students would recommend us to a friend. Thank you for your support last term during Inspection. It's great to know that you are with us.

### SPRING TERM

This term is an especially important one as many of you are now starting to work towards final assessments and getting ready for assessments and examinations. Please can I take this opportunity to remind you that your continued punctuality and attendance at all classes is really important. The efforts you put in at this stage will benefit you in the long run and will hopefully be reflected in your final results.

Wishing you all the best for successful and enjoyable term of learning.

Sue Knottenbelt  
**Interim Head of Wolverhampton Adult Education Service**

# An Outstanding Result



## THIS PROVIDER IS OUTSTANDING BECAUSE:

- the vast majority of learners at all levels achieve their course and personal learning goals
  - learners progress well from each level to the next and across subject areas within the provision and into further and higher education and employment
  - learners develop their personal and social and employability skills to a high degree
  - consistently good teaching and exceptional learning support provide excellent learning experiences
  - tutors use the resources of a high standard skilfully and imaginatively to promote learning
  - leadership and management are excellent and senior managers have a clear vision of the needs of the community, which is shared by all staff
  - the curriculum offer reflects the Service's key role in meeting the priorities of the local authority and its partners to get more of the community into work and to regenerate the city
  - excellent management of staff performance supports particularly well the continuous improvement of the learning experience
  - managers use their very well thought-out and very extensive partnerships with local organisations particularly effectively to share skills and resources, to eliminate duplication and help the community to access programmes at more convenient sites
  - the inclusive nature of the provision ensures
- that it meets very well the needs of all groups in Wolverhampton, including those with learning difficulties and/or disabilities
  - high expectations of tutors and support staff enable learners to reach their full potential and produce very high quality work.

## What does the provider need to do to improve further?

- Increase participation in mathematics further by ensuring that managers and tutors encourage and support learners to develop these skills to meet the needs of the local communities better, and convince those with low levels of skills in mathematics to improve them to increase their employability and overall life chances.
- Ensure that the good practice in the use of information learning technologies (ILT) and the development of the virtual learning environment (VLE) is consistent across all departments by setting clear expectations and encouraging tutors to share and learn from each other so that all learners benefit.

## News

### THIS COULD BE YOU!

**DOCTOR, NURSE, SOCIAL WORKER,  
ARTIST, BRITISH SIGN LANGUAGE  
INTERPRETER, TEACHER, SUPPORT  
WORKER**

Find out more about how you can start a career on a Level 3 course by coming to our "Shaping Futures: On Course for a Career" event on Wednesday 6 May or Wednesday 5 July 2015, between 10.00am and 3.00pm in the Foyer building.

An information event to give you advice about how you can move into a career, enhance existing prospects or progress to university. Interested individuals will also be able to:

- access information, advice and guidance,
- chat to tutors to find more information about the range of courses available,
- sit an initial assessment to check you have the right skills to take on that level of course (10.00am - 2.00pm)
- gain financial information, particularly in relation to student finance.



### FE CHOICES SURVEY

Thank you to all students who have kindly responded to the recent Learner Satisfaction Survey. It is important to us that you are able to give honest feedback about your learning experience. Your individual responses are confidential but it gives us useful information to identify areas we need to improve. You can also search, review and compare organisations offering post 16 learning and training on [www.fechoices.skillsfundingagency.bis.gov.uk](http://www.fechoices.skillsfundingagency.bis.gov.uk) which details students' feedback from the previous year.

### GET DISCOUNTS WITH AN NUS EXTRA CARD

Great news! Our learners can now register with the National Union of Students and purchase a NUS Extra Card from £12 per year to receive fantastic discounts. Do you fancy money off your favourite restaurants, shops or days out? Take a look at some of the 160 discounts of up to 25% on [www.nus.org.uk](http://www.nus.org.uk) and then simply log on to [www.cards.nusextra.co.uk](http://www.cards.nusextra.co.uk) to apply. You need just 3 things to process your application:

- to be a learner
- be able to upload your photo and finally
- have your payment ready!

The National Union of Students (NUS) is a voluntary membership organisation which makes a real difference to the lives of students and its member students' unions.

Drop into the Learning Development Centre for details of how to apply.



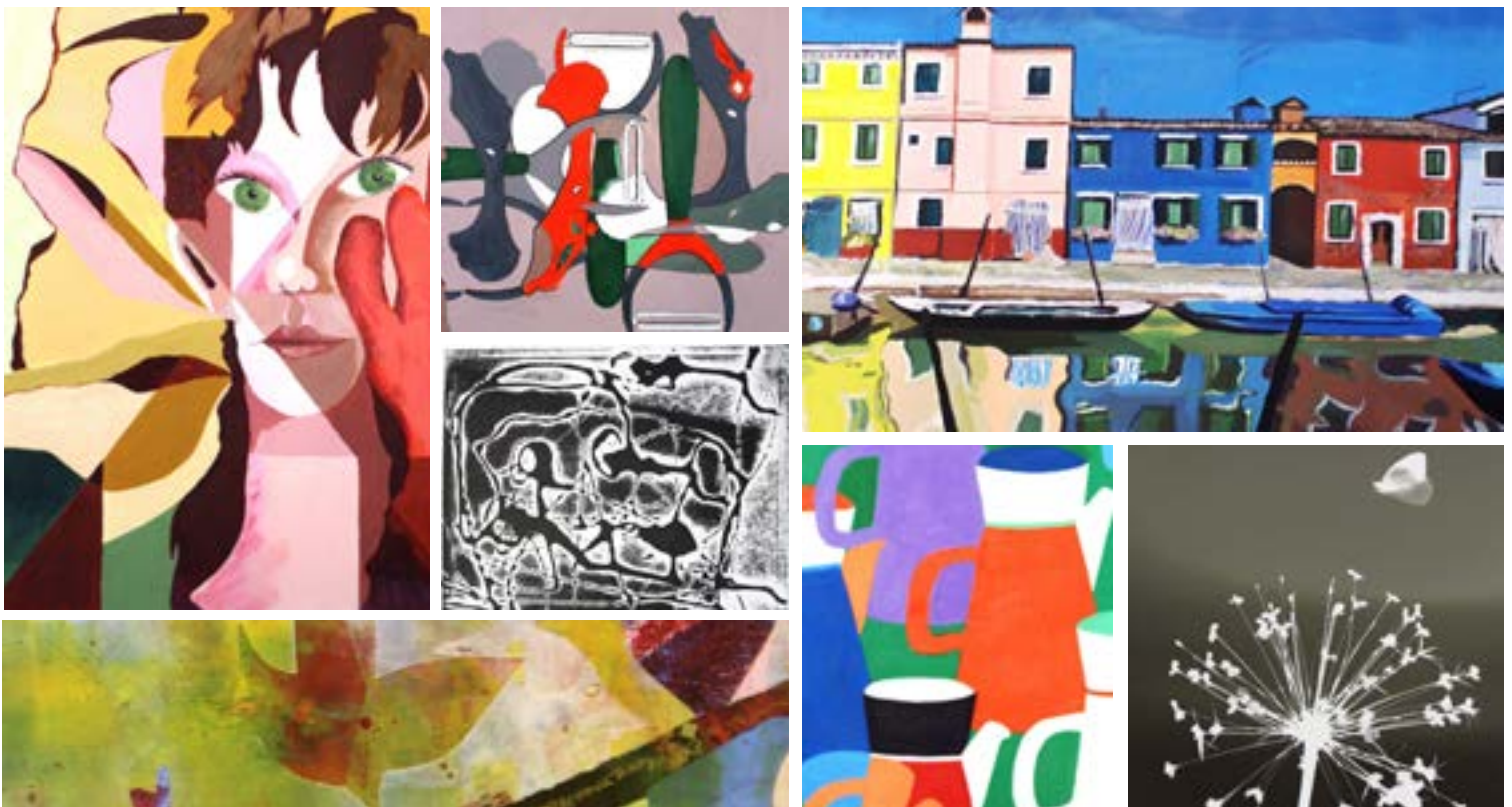
Adult Education Service

# TOGETHER EXHIBITION

10 MARCH - 12 JUNE 2015

ST GEORGE'S PARADE, WOLVERHAMPTON WV1 3AU

Showcasing the work of artists who have studied **printmaking, painting and drawing** at Wolverhampton Adult Education Service



01902 551658

ST GEORGE'S PARADE, WOLVERHAMPTON WV1 3AU

[WWW.AES.WOLVERHAMPTON.GOV.UK](http://WWW.AES.WOLVERHAMPTON.GOV.UK)

Wolverhampton  
City Council



# The Foyer Café

## Opening Times

9.00am - 3.45pm  
Monday - Thursday  
9.00am - 1.15pm  
Friday

Hot Drinks 60p before 10.30am



**Cheese Toasties**

£2.00

**Beans on Toast and a Hot Drink**

£2.50

**Ham Salad Sandwich**

£1.95

**Cheese & Tomato Sandwich**

£1.70

**Ham, Cheese or Tuna Salad Wraps**

£2.25

**Bacon Sandwich**

£1.75

**Jacket Potato and Coleslaw**

£2.50



£3

Meal Deal



Sandwich/Wrap | Crisps, Flapjack or Fruit | Cold Drink

The Foyer Café | 01902 551656



## Wear it, Beat It!

On Thursday 5th February a group of staff from Wolverhampton Adult Education Service wore red to work to support the 'Wear it, Beat It' day for the British Heart Foundation. Everyone wearing red made a donation to help raise as much money as possible.

Coronary heart disease is the UK's single biggest killer. For over 50 years the British Heart Foundation pioneered research that's transformed the lives of people living with heart and circulatory conditions. Their work has been central to the discoveries of vital treatments that are changing the fight against heart disease.

Every pound raised will help make a difference to people's lives. Linda Page, Café Manager said, "Thanks everyone for making your donations and helping raise £61.00 for this worthy cause".

## AES did a comic turn for charity

Members of Wolverhampton's Adult Education Service helped raise more than £1,000 for Children in Need after hosting a range of activities including a comedy night.

The AES's Foyer Café team organised a week of entertainment from 10-14 November, culminating in an evening of comedy featuring performers from across the Black Country, including Printmaking student Laura Hickman and Swingerella.

Councillor Phil Page, Wolverhampton City Council's Cabinet Member for Schools, Skills and Learning, said: "I'd like to thank Café Manager Linda Page and her team for organising the comedy night and a number of other events during the week which have helped raise vital funds for Children in Need.

"I'd also like to thank the comedians who took part, and the artists who kindly donated original pieces of artwork for a charity auction, and of course everyone who purchased tickets and made donations and helped raise a total of £1,057".



# Send us your articles

If you would like to contribute to the next issue of Inbrief then please send your articles to:

**[enquiries@aes.wolverhampton.gov.uk](mailto:enquiries@aes.wolverhampton.gov.uk)**

for the attention of Service Marketing.